



OZARKS TRANSPORTATION ORGANIZATION
A METROPOLITAN PLANNING ORGANIZATION

205 PARK CENTRAL EAST, SUITE 205 SPRINGFIELD, MO 65806 417-865-3042 [p] 417-862-6013 [f]

19 May 2014

Ms. Eva Voss
Transportation Planning
Missouri Department of Transportation
P. O. Box 270
Jefferson City, Missouri 65102

Dear Ms. Voss:

I am writing to advise you that the Ozarks Transportation Organization approved Administrative Modification Number Two to the OTO FY 2014-2017 Transportation Improvement Program (TIP) on May 19, 2014. The adoption included demonstration of fiscal constraint as required by federal regulations. Please find enclosed the administrative modification, which includes the following:

Revisions –

- **Moving a project's funds to another Fiscal Year provided they are not being moved into or out of the first four FY's of a TIP**
- **Changes in a project's programmed amount less than 15 percent (up to \$2 million)**

Route 65 Pavement Improvements (GR1304)

This project was to move funding from Fiscal Years 2015 and 2016 to Fiscal Year 2014 and to reflect less required funding.

Please let me know if you have any questions or need any other information.

Sincerely,

Natasha L. Longpine, AICP
Principal Planner





Transportation Improvement Program - FY 2014-2017

Project Detail by Section and Project Number with Map

E) Roadways Section

TIP # GR1304 ROUTE 65 PAVEMENT IMPROVEMENTS

Route Route 65
From Route KK **To** I-44
Location/Agency Greene County
Federal Agency FHWA
Responsible Agency MoDOT
Federal Funding Category NHPP(NHS)
MoDOT Funding Category Taking Care of the System
AC Year of Conv. FY 2015 and FY 2106 **STIP #** 8P3006



Project Description

Pavement improvements on various sections of northbound Route 65 from Route KK to I-44.

Fund Code	Source	Phase	FY2014	FY2015	FY2016	FY2017	Total
FHWA (NHS)	Federal	ENG	\$0	\$20,800	\$52,800	\$0	\$73,600
MoDOT	State	ENG	\$0	-\$20,800	-\$52,800	\$0	-\$73,600
MoDOT	State	ENG	\$26,000	\$66,000	\$0	\$0	\$92,000
FHWA (NHS)	Federal	CON	\$0	\$0	\$1,745,600	\$0	\$1,745,600
MoDOT	State	CON	\$0	\$0	-\$1,745,600	\$0	-\$1,745,600
MoDOT	State	CON	\$0	\$2,182,000	\$0	\$0	\$2,182,000
Totals			\$26,000	\$2,248,000	\$0	\$0	\$2,274,000

Notes

Source of MoDOT Funds: State transportation revenues. Previously programmed funds of \$2,000. Advance Construction with conversion anticipated in FY 2015 and FY 2016.

Prior Cost	\$2,000
Future Cost	\$0
Total Cost	\$2,276,000



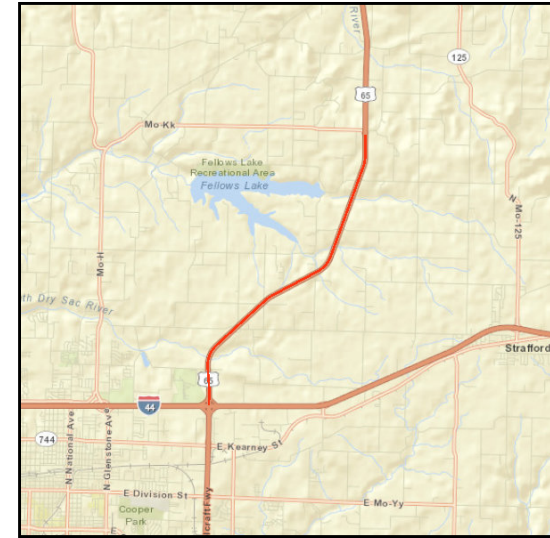
E) Roadways Section

TIP # GR1304 ROUTE 65 PAVEMENT IMPROVEMENTS

Route Route 65
From Route KK **To** I-44
Location/Agency Greene County
Federal Agency FHWA
Responsible Agency MoDOT
Federal Funding Category NHPP(NHS)
MoDOT Funding Category Taking Care of the System
AC Year of Conv. FY 2015 and FY 2106 **STIP #** 8P3006

Project Description

Pavement improvements on various sections of northbound Route 65 from Route KK to I-44.



Fund Code	Source	Phase	FY2014	FY2015	FY2016	FY2017	Total
MoDOT	State	ENG	\$26,000	\$0	\$0	\$0	\$26,000
MoDOT-AC	State	ENG	\$104,000	\$0	\$0	\$0	\$104,000
MoDOT	State	CON	\$361,400	\$0	\$0	\$0	\$361,400
MoDOT-AC	State	CON	\$1,445,600	\$0	\$0	\$0	\$1,445,600
Totals			\$1,937,000	\$0	\$0	\$0	\$1,937,000

Notes

Source of MoDOT Funds: State transportation revenues. Previously programmed funds of \$2,000. Advance Construction with conversion anticipated in FY 2015 and FY 2016.

Prior Cost	\$2,000
Future Cost	\$0
Total Cost	\$1,939,000

FINANCIAL SUMMARY

Roadways

YEARLY SUMMARY															
PROJECT	Federal									Local	State			TOTAL	
	FHWA (STP-U)	FHWA (SAFETY)	FHWA (BRIDGE)	FHWA (STP)	FHWA (I/M)	FHWA (130)	FHWA (NHS)	FHWA (BRM)	FHWA (BRO)	LOCAL	MoDOT	MoDOT-AC	MoDOT-GCSA		
FY 2014															
BA1401	\$264,699	\$0	\$0	\$0	\$0	\$0	\$0	\$0	\$0	\$0	\$66,175	\$0	\$0	\$0	\$330,874
CC0901	\$0	\$0	\$0	\$0	\$0	\$0	\$0	\$0	\$0	\$0	\$0	\$2,000	\$0	\$0	\$2,000
CC1102	\$0	\$0	\$0	\$0	\$0	\$0	\$0	\$0	\$0	\$0	\$0	\$2,000	\$0	\$0	\$2,000
CC1110	\$228,000	\$0	\$0	\$0	\$0	\$0	\$0	\$0	\$0	\$0	\$100,000	\$386,000	\$0	\$0	\$714,000
CC1201	\$0	\$1,759,500	\$0	\$0	\$0	\$0	\$0	\$0	\$0	\$0	\$0	\$195,500	\$0	\$0	\$1,955,000
CC1202	\$0	\$200,400	\$0	\$0	\$0	\$0	\$0	\$0	\$0	\$0	\$0	\$22,600	\$0	\$0	\$223,000
CC1203	\$0	\$0	\$0	\$0	\$0	\$0	\$320,000	\$0	\$0	\$0	\$0	\$33,000	\$0	\$0	\$353,000
CC1301	\$0	\$50,000	\$0	\$0	\$0	\$0	\$0	\$0	\$0	\$0	\$0	\$189,000	\$0	\$0	\$239,000
CC1302	\$0	\$891,000	\$0	\$0	\$0	\$0	\$0	\$0	\$0	\$0	\$0	\$99,000	\$0	\$0	\$990,000
CC1303	\$0	\$184,000	\$0	\$0	\$0	\$0	\$0	\$0	\$0	\$0	\$0	\$1,686,000	\$0	\$0	\$1,870,000
CC1304	\$0	\$101,700	\$0	\$0	\$0	\$0	\$0	\$0	\$0	\$0	\$0	\$11,300	\$0	\$0	\$113,000
CC1305	\$0	\$143,100	\$0	\$0	\$0	\$0	\$0	\$0	\$0	\$0	\$0	\$15,900	\$0	\$0	\$159,000
CC1306	\$0	\$0	\$0	\$2,387,200	\$0	\$0	\$0	\$0	\$0	\$0	\$0	(\$2,387,200)	\$0	\$0	\$0
CC1401	\$0	\$270,900	\$0	\$0	\$0	\$0	\$0	\$0	\$0	\$0	\$0	\$30,100	\$0	\$0	\$301,000
GR1010	\$0	\$0	\$0	\$0	\$0	\$0	\$0	\$0	\$0	\$0	\$0	\$1,160,000	\$0	\$0	\$1,160,000
GR1104	\$0	\$0	\$0	\$0	\$0	\$80,000	\$0	\$0	\$0	\$0	\$0	\$0	\$0	\$20,000	\$100,000
GR1206	\$0	\$0	\$2,008,000	\$0	\$0	\$0	\$0	\$0	\$0	\$0	\$0	\$502,000	\$0	\$0	\$2,510,000
GR1213	\$0	\$0	\$0	\$0	\$0	\$0	\$0	\$0	\$0	\$1,133,600	\$283,400	\$0	\$0	\$0	\$1,417,000
GR1303	\$0	\$0	\$0	\$3,588,800	\$0	\$0	\$0	\$0	\$0	\$0	\$0	(\$3,588,800)	\$0	\$0	\$0
GR1304	\$0	\$0	\$0	\$0	\$0	\$0	\$0	\$0	\$0	\$0	\$0	\$387,400	\$1,549,600	\$0	\$1,937,000
GR1305	\$0	\$0	\$0	\$0	\$0	\$0	\$0	\$0	\$0	\$0	\$0	\$2,785,000	\$0	\$0	\$2,785,000
GR1306	\$0	\$0	\$0	\$0	\$0	\$0	\$0	\$0	\$0	\$0	\$0	\$1,839,000	\$0	\$0	\$1,839,000
GR1308	\$0	\$0	\$0	\$0	\$0	\$0	\$0	\$0	\$0	\$0	\$0	\$0	\$0	\$0	\$0
GR1309	\$0	\$0	\$0	\$0	\$0	\$0	\$0	\$52,852	\$0	\$0	\$0	(\$52,852)	\$0	\$0	\$0
GR1311	\$0	\$0	\$0	\$0	\$0	\$0	\$0	\$0	\$0	\$168,000	\$42,000	\$0	\$0	\$0	\$210,000
GR1312	\$0	\$0	\$0	\$0	\$0	\$0	\$0	\$0	\$0	\$371,200	\$92,800	\$0	\$0	\$0	\$464,000
GR1401	\$0	\$0	\$0	\$0	\$0	\$0	\$0	\$0	\$0	\$0	\$0	\$314,000	\$0	\$0	\$314,000
GR1402	\$0	\$0	\$0	\$0	\$0	\$247,500	\$0	\$0	\$0	\$0	\$0	\$169,000	\$0	\$27,500	\$444,000
GR1403	\$0	\$0	\$0	\$0	\$0	\$0	\$0	\$0	\$0	\$0	\$0	\$2,000	\$0	\$0	\$2,000
GR1404	\$0	\$0	\$0	\$0	\$216,000	\$0	\$0	\$0	\$0	\$0	\$0	\$0	\$0	\$0	\$216,000
GR1405	\$0	\$56,000	\$0	\$0	\$0	\$0	\$0	\$0	\$0	\$0	\$0	\$309,000	\$0	\$0	\$365,000
GR1406	\$0	\$28,000	\$0	\$0	\$0	\$0	\$0	\$0	\$0	\$0	\$0	\$689,000	\$0	\$0	\$717,000
GR1407	\$0	\$0	\$0	\$0	\$0	\$0	\$0	\$0	\$0	\$0	\$150,000	\$18,000	\$0	\$0	\$168,000
MO1105	\$0	\$0	\$0	\$0	\$0	\$0	\$0	\$0	\$0	\$0	\$0	\$284,000	\$0	\$0	\$284,000
MO1150	\$0	\$0	\$0	\$0	\$0	\$0	\$0	\$0	\$0	\$0	\$0	\$193,000	\$0	\$0	\$193,000
MO1201	\$0	\$900	\$0	\$0	\$0	\$0	\$0	\$0	\$0	\$0	\$0	\$100	\$0	\$0	\$1,000
MO1401	\$0	\$0	\$0	\$0	\$0	\$0	\$0	\$0	\$0	\$0	\$0	\$52,000	\$0	\$0	\$52,000
MO1403	\$268,000	\$0	\$0	\$0	\$0	\$0	\$0	\$0	\$0	\$0	\$67,000	\$673,000	\$0	\$0	\$1,008,000
MO1404	\$0	\$0	\$0	\$0	\$0	\$0	\$0	\$0	\$0	\$0	\$0	\$2,000	\$0	\$0	\$2,000
MO1405	\$0	\$0	\$0	\$0	\$0	\$0	\$0	\$0	\$0	\$0	\$0	\$25,000	\$0	\$0	\$25,000
MO1406	\$0	\$0	\$0	\$0	\$0	\$0	\$0	\$0	\$0	\$0	\$0	\$807,000	\$0	\$0	\$807,000
MO1407	\$0	\$0	\$0	\$0	\$0	\$0	\$0	\$0	\$0	\$0	\$0	\$660,000	\$0	\$0	\$660,000
MO1408	\$0	\$0	\$0	\$0	\$0	\$0	\$0	\$0	\$0	\$0	\$0	\$3,000	\$0	\$0	\$3,000
MO1409	\$0	\$0	\$0	\$0	\$0	\$0	\$0	\$0	\$0	\$0	\$0	\$2,000	\$0	\$0	\$2,000
MO1410	\$0	\$0	\$0	\$12,000	\$0	\$0	\$0	\$0	\$0	\$0	\$0	\$3,000	\$0	\$0	\$15,000
MO1411	\$0	\$0	\$0	\$16,000	\$0	\$0	\$0	\$0	\$0	\$0	\$0	\$4,000	\$0	\$0	\$20,000
MO1501	\$0	\$0	\$0	\$0	\$0	\$0	\$0	\$0	\$0	\$0	\$0	\$2,000	\$0	\$0	\$2,000
MO1505	\$0	\$0	\$0	\$0	\$0	\$0	\$0	\$0	\$0	\$0	\$0	\$2,000	\$0	\$0	\$2,000
MO1605	\$0	\$0	\$0	\$0	\$0	\$0	\$0	\$0	\$0	\$0	\$0	\$2,000	\$0	\$0	\$2,000
MO1705	\$0	\$0	\$0	\$0	\$0	\$0	\$0	\$0	\$0	\$0	\$0	\$2,000	\$0	\$0	\$2,000
NX0701	\$301,920	\$0	\$0	\$0	\$0	\$0	\$0	\$0	\$0	\$0	\$75,480	\$0	\$0	\$0	\$377,400
NX0703	\$76,000	\$0	\$0	\$0	\$0	\$0	\$0	\$0	\$0	\$0	\$19,000	\$0	\$0	\$0	\$95,000
NX0801	\$0	\$0	\$0	\$0	\$0	\$0	\$0	\$0	\$0	\$0	\$175,000	\$0	\$0	\$0	\$175,000
NX0803	\$0	\$0	\$0	\$0	\$0	\$0	\$0	\$0	\$0	\$0	\$1,313,314	\$0	\$0	\$0	\$1,313,314
NX0906	\$0	\$0	\$0	\$0	\$0	\$0	\$0	\$0	\$0	\$0	\$0	\$2,000	\$0	\$0	\$2,000
NX1401	\$0	\$0	\$0	\$0	\$0	\$0	\$0	\$0	\$0	\$0	\$188,700	\$0	\$0	\$0	\$188,700
OK1006	\$0	\$0	\$0	\$535,200	\$0	\$0	\$0	\$0	\$0	\$0	\$0	(\$535,200)	\$0	\$0	\$0
OK1401	\$0	\$0	\$0	\$0	\$0	\$0	\$0	\$0	\$0	\$0	\$0	\$2,000	\$0	\$0	\$2,000
RG0901	\$0	\$0	\$0	\$0	\$0	\$0	\$0	\$0	\$0	\$0	\$0	\$2,000	\$0	\$0	\$2,000
RG1201	\$0	\$0	\$0	\$0	\$0	\$0	\$0	\$0	\$0	\$0	\$0	\$1,000	\$0	\$0	\$1,000
RP1201	\$0	\$0	\$0	\$0	\$0	\$0	\$217,600	\$0	\$0	\$0	\$0	(\$217,600)	\$0	\$0	\$0
RP1301	\$0	\$0	\$0	\$0	\$0	\$0	\$0	\$0	\$0	\$0	\$0	\$1,683,000	\$0	\$0	\$1,683,000
RP1302	\$0	\$0	\$0	\$0	\$0	\$0	\$949,600	\$0	\$0	\$0	\$0	(\$949,600)	\$0	\$0	\$0
RP1303	\$64,000	\$0	\$0	\$0	\$0	\$0	\$0	\$0	\$0	\$0	\$16,000	\$0	\$0	\$0	\$80,000
FY 2014 continued															
RP1305	\$0	\$0	\$0	\$0	\$0	\$0	\$182,400	\$0	\$0	\$0	\$0	(\$182,400)	\$0	\$0	\$0
RP1401	\$0	\$0	\$0	\$0	\$0	\$0	\$0	\$0	\$0	\$0	\$0	\$2,000	\$0	\$0	\$2,000
SP1018	\$0	\$0	\$80,000	\$0	\$0	\$0	\$0	\$0	\$0	\$0	\$0	\$20,000	\$0	\$0	\$100,000
SP1021	\$0	\$0	\$0	\$660,000	\$0	\$0	\$0	\$0	\$0	\$0	\$0	(\$660,000)	\$0	\$0	\$0

FINANCIAL SUMMARY

Roadways

YEARLY SUMMARY															
PROJECT	Federal										Local	State			TOTAL
	FHWA (STP-U)	FHWA (SAFETY)	FHWA (BRIDGE)	FHWA (STP)	FHWA (I/M)	FHWA (130)	FHWA (NHS)	FHWA (BRM)	FHWA (BRO)	LOCAL	MoDOT	MoDOT-AC	MoDOT-GCSA		
SP1106	\$0	\$0	\$0	\$0	\$0	\$0	\$0	\$0	\$0	\$0	\$0	\$5,000	\$0	\$0	\$5,000
SP1108	\$2,791,367	\$0	\$0	\$0	\$0	\$0	\$512,000	\$1,189,657	\$0	\$4,153,300	\$3,961,475	\$0	\$0	\$12,607,799	
SP1109	\$0	\$0	\$0	\$2,067,400	\$0	\$0	\$24,000	\$0	\$0	\$2,000,000	\$66,000	\$0	\$0	\$4,147,400	
SP1110	\$0	\$0	\$0	\$0	\$0	\$0	\$0	\$1,256,800	\$0	\$0	(\$1,256,800)	\$0	\$0	\$0	
SP1112	\$0	\$0	\$0	\$0	\$0	\$0	\$0	\$0	\$0	\$0	\$5,000	\$0	\$0	\$5,000	
SP1122	\$0	\$0	\$0	\$29,480	\$0	\$0	\$0	\$0	\$0	\$0	\$0	\$0	\$0	\$29,480	
SP1202	\$0	\$0	\$0	\$0	\$0	\$0	\$1,175,200	\$0	\$0	\$0	(\$1,175,200)	\$0	\$0	\$0	
SP1203	\$0	\$0	\$0	\$819,200	\$0	\$0	\$0	\$0	\$0	\$0	(\$819,200)	\$0	\$0	\$0	
SP1204	\$0	\$0	\$0	\$0	\$0	\$0	\$0	\$0	\$0	\$0	\$2,000	\$0	\$0	\$2,000	
SP1206	\$0	\$129,000	\$0	\$0	\$0	\$0	\$55,200	\$0	\$0	\$0	\$542,800	\$0	\$0	\$727,000	
SP1209	\$0	\$0	\$0	\$499,915	\$0	\$0	\$0	\$0	\$0	\$124,979	\$0	\$0	\$0	\$624,894	
SP1213	\$2,584,800	\$0	\$0	\$0	\$0	\$0	\$0	\$0	\$0	\$1,083,700	\$230,000	\$0	\$0	\$3,898,500	
SP1302	\$0	\$0	\$0	\$0	\$0	\$80,000	\$0	\$0	\$0	\$0	\$0	\$0	\$20,000	\$100,000	
SP1306	\$0	\$0	\$0	\$0	\$0	\$160,000	\$0	\$0	\$0	\$0	\$40,000	\$0	\$0	\$200,000	
SP1312	\$0	\$0	\$0	\$0	\$0	\$0	\$0	\$0	\$0	\$0	\$2,312,000	\$0	\$0	\$2,312,000	
SP1313	\$3,105,258	\$0	\$0	\$0	\$0	\$0	\$0	\$0	\$0	\$776,269	\$4,532,473	\$0	\$0	\$8,414,000	
SP1314	\$0	\$0	\$0	\$0	\$0	\$0	\$0	\$0	\$0	\$0	\$1,266,000	\$0	\$0	\$1,266,000	
SP1315	\$0	\$0	\$0	\$0	\$0	\$0	\$0	\$0	\$0	\$0	\$4,000	\$0	\$0	\$4,000	
SP1316	\$0	\$0	\$0	\$0	\$0	\$0	\$0	\$0	\$0	\$0	\$17,000	\$0	\$0	\$17,000	
SP1317	\$0	\$0	\$0	\$0	\$0	\$0	\$0	\$0	\$0	\$0	\$860,000	\$0	\$0	\$860,000	
SP1318	\$0	\$0	\$0	\$0	\$0	\$0	\$0	\$0	\$0	\$0	\$10,000	\$0	\$0	\$10,000	
SP1319	\$0	\$0	\$0	\$0	\$0	\$0	\$0	\$0	\$0	\$0	\$999,000	\$0	\$0	\$999,000	
SP1321	\$10,000	\$0	\$0	\$0	\$0	\$0	\$0	\$0	\$0	\$3,984	\$0	\$0	\$0	\$13,984	
SP1322	\$0	\$0	\$0	\$0	\$0	\$0	\$0	\$0	\$0	\$1,151,244	\$362,610	\$0	\$0	\$1,513,854	
SP1323	\$0	\$0	\$0	\$0	\$0	\$0	\$0	\$0	\$0	\$0	\$5,000	\$0	\$0	\$5,000	
SP1324	\$0	\$0	\$0	\$0	\$0	\$0	\$0	\$0	\$0	\$0	\$469,000	\$0	\$0	\$469,000	
SP1401	\$0	\$0	\$0	\$0	\$0	\$0	\$0	\$0	\$0	\$0	\$3,000	\$0	\$0	\$3,000	
SP1403	\$0	\$0	\$0	\$0	\$0	\$0	\$0	\$0	\$0	\$0	\$602,000	\$0	\$0	\$602,000	
SP1404	\$0	\$0	\$0	\$0	\$0	\$0	\$0	\$0	\$0	\$0	\$390,000	\$0	\$0	\$390,000	
SP1405	\$0	\$0	\$0	\$0	\$0	\$0	\$0	\$0	\$0	\$0	\$2,000	\$0	\$0	\$2,000	
SP1407	\$300,000	\$0	\$0	\$0	\$0	\$0	\$0	\$0	\$0	\$142,000	\$780,000	\$0	\$0	\$1,222,000	
SP1408	\$595,000	\$0	\$0	\$0	\$0	\$0	\$0	\$0	\$0	\$282,000	\$270,000	\$0	\$0	\$1,147,000	
SP1409	\$0	\$0	\$0	\$0	\$0	\$0	\$0	\$0	\$0	\$0	\$2,000	\$0	\$0	\$2,000	
SP1410	\$0	\$0	\$0	\$0	\$0	\$0	\$0	\$0	\$0	\$0	\$2,000	\$0	\$0	\$2,000	
SP1411	\$0	\$0	\$0	\$0	\$0	\$0	\$0	\$0	\$0	\$0	\$6,000	\$0	\$0	\$6,000	
SP1415	\$0	\$0	\$0	\$0	\$0	\$0	\$0	\$0	\$0	\$0	\$10,000	\$0	\$0	\$10,000	
SP1416	\$0	\$0	\$0	\$0	\$0	\$0	\$0	\$0	\$0	\$0	\$8,000	\$0	\$0	\$8,000	
SP1417	\$799,517	\$0	\$0	\$0	\$0	\$0	\$0	\$0	\$0	\$199,879	\$999,684	\$0	\$0	\$1,999,080	
ST1101	\$0	\$222,000	\$0	\$0	\$0	\$0	\$0	\$0	\$0	\$0	\$544,000	\$0	\$0	\$766,000	
ST1201	\$0	\$0	\$0	\$0	\$0	\$0	\$0	\$0	\$0	\$0	\$584,000	\$0	\$0	\$584,000	
ST1401	\$0	\$126,000	\$0	\$0	\$0	\$0	\$0	\$0	\$0	\$0	\$234,000	\$0	\$0	\$360,000	
WH201	\$0	\$0	\$0	\$470,200	\$0	\$0	\$0	\$0	\$0	\$0	(\$470,200)	\$0	\$0	\$0	
WH301	\$0	\$0	\$0	\$0	\$0	\$0	\$0	\$0	\$0	\$0	\$3,000	\$0	\$0	\$3,000	
SUBTOTAL	\$11,388,561	\$4,162,500	\$2,088,000	\$11,085,395	\$216,000	\$567,500	\$4,745,652	\$1,189,657	\$1,672,800	\$12,506,224	\$23,098,890	\$1,549,600	\$67,500	\$74,338,279	

FINANCIAL SUMMARY

Roadways

YEARLY SUMMARY

PROJECT	Federal									Local	State			TOTAL	
	FHWA (STP-U)	FHWA (SAFETY)	FHWA (BRIDGE)	FHWA (STP)	FHWA (I/M)	FHWA (130)	FHWA (NHS)	FHWA (BRM)	FHWA (BRO)	LOCAL	MoDOT	MoDOT-AC	MoDOT-GCSA		
FY 2015															
BA1101	\$8,000	\$0	\$0	\$0	\$0	\$0	\$0	\$0	\$0	\$0	\$2,000	\$0	\$0	\$0	\$10,000
CC0901	\$0	\$0	\$0	\$1,600	\$0	\$0	\$0	\$0	\$0	\$0	\$0	\$400	\$0	\$0	\$2,000
CC1102	\$0	\$0	\$0	\$0	\$0	\$0	\$1,600	\$0	\$0	\$0	\$0	\$400	\$0	\$0	\$2,000
CC1110	\$2,072,000	\$0	\$0	\$0	\$0	\$0	\$308,800	\$0	\$0	\$0	\$1,557,044	\$3,896,200	\$0	\$0	\$7,834,044
CC1203	\$0	\$0	\$0	\$0	\$0	\$0	\$282,400	\$0	\$0	\$0	\$0	(\$282,400)	\$0	\$0	\$0
CC1301	\$0	\$0	\$0	\$146,700	\$0	\$0	\$0	\$0	\$0	\$0	\$0	(\$146,700)	\$0	\$0	\$0
CC1303	\$0	\$0	\$0	\$1,185,600	\$0	\$0	\$0	\$0	\$0	\$0	\$0	(\$1,185,600)	\$0	\$0	\$0
GR1010	\$400,000	\$911,000	\$0	\$0	\$0	\$0	\$928,000	\$0	\$0	\$0	\$0	\$9,692,000	\$0	\$0	\$11,931,000
GR1104	\$0	\$0	\$0	\$0	\$0	\$40,000	\$0	\$0	\$0	\$0	\$0	\$0	\$0	\$10,000	\$50,000
GR1304	\$0	\$0	\$0	\$0	\$0	\$0	\$0	\$0	\$0	\$0	\$0	\$0	\$0	\$0	\$0
GR1305	\$0	\$0	\$0	\$0	\$0	\$0	\$2,228,000	\$0	\$0	\$0	\$0	(\$2,228,000)	\$0	\$0	\$0
GR1306	\$0	\$0	\$0	\$1,470,400	\$0	\$0	\$0	\$0	\$0	\$0	\$0	(\$1,470,400)	\$0	\$0	\$0
GR1308	\$0	\$0	\$0	\$0	\$0	\$0	\$0	\$0	\$0	\$0	\$0	\$0	\$0	\$0	\$0
GR1401	\$0	\$0	\$0	\$251,200	\$0	\$0	\$0	\$0	\$0	\$0	\$0	(\$251,200)	\$0	\$0	\$0
GR1402	\$0	\$0	\$0	\$0	\$0	\$2,002,500	\$0	\$0	\$0	\$0	\$0	\$133,000	\$0	\$222,500	\$2,358,000
GR1403	\$0	\$0	\$0	\$0	\$0	\$0	\$0	\$0	\$0	\$0	\$0	\$2,000	\$0	\$0	\$2,000
GR1404	\$0	\$0	\$0	\$0	\$180,000	\$0	\$0	\$0	\$0	\$0	\$0	(\$180,000)	\$0	\$0	\$0
GR1405	\$0	\$0	\$0	\$242,200	\$0	\$0	\$0	\$0	\$0	\$0	\$0	(\$242,200)	\$0	\$0	\$0
GR1406	\$0	\$0	\$0	\$548,800	\$0	\$0	\$0	\$0	\$0	\$0	\$0	(\$548,800)	\$0	\$0	\$0
MO1105	\$0	\$0	\$0	\$0	\$0	\$0	\$0	\$0	\$0	\$0	\$0	\$284,000	\$0	\$0	\$284,000
MO1150	\$0	\$0	\$0	\$155,000	\$0	\$0	\$0	\$0	\$0	\$0	\$0	(\$155,000)	\$0	\$0	\$0
MO1201	\$0	\$900	\$0	\$0	\$0	\$0	\$0	\$0	\$0	\$0	\$0	\$100	\$0	\$0	\$1,000
MO1403	\$0	\$0	\$0	\$538,400	\$0	\$0	\$0	\$0	\$0	\$0	\$0	(\$538,400)	\$0	\$0	\$0
MO1404	\$0	\$0	\$0	\$0	\$0	\$0	\$1,600	\$0	\$0	\$0	\$0	\$400	\$0	\$0	\$2,000
MO1406	\$0	\$0	\$0	\$8,000	\$0	\$0	\$0	\$0	\$0	\$0	\$0	(\$8,000)	\$0	\$0	\$0
MO1407	\$0	\$0	\$0	\$528,000	\$0	\$0	\$0	\$0	\$0	\$0	\$0	(\$528,000)	\$0	\$0	\$0
MO1408	\$0	\$0	\$0	\$0	\$0	\$0	\$2,400	\$0	\$0	\$0	\$0	\$1,015,600	\$0	\$0	\$1,018,000
MO1409	\$0	\$0	\$0	\$0	\$0	\$0	\$1,800	\$0	\$0	\$0	\$0	\$1,646,200	\$0	\$0	\$1,648,000
MO1501	\$0	\$0	\$0	\$0	\$0	\$0	\$0	\$0	\$0	\$0	\$0	\$52,000	\$0	\$0	\$52,000
MO1503	\$276,000	\$0	\$0	\$0	\$0	\$0	\$0	\$0	\$0	\$0	\$69,000	\$673,000	\$0	\$0	\$1,018,000
MO1505	\$0	\$0	\$0	\$2,000	\$0	\$0	\$0	\$0	\$0	\$0	\$0	\$196,000	\$0	\$0	\$198,000
MO1605	\$0	\$0	\$0	\$1,600	\$0	\$0	\$0	\$0	\$0	\$0	\$0	\$400	\$0	\$0	\$2,000
MO1705	\$0	\$0	\$0	\$1,600	\$0	\$0	\$0	\$0	\$0	\$0	\$0	\$400	\$0	\$0	\$2,000
NX0801	\$0	\$0	\$0	\$0	\$0	\$0	\$0	\$0	\$0	\$0	\$1,530,000	\$0	\$0	\$0	\$1,530,000
NX0906	\$0	\$0	\$0	\$1,748,541	\$0	\$0	\$0	\$0	\$0	\$0	\$1,746,941	\$400	\$0	\$0	\$3,495,882
NX1501	\$0	\$0	\$0	\$0	\$0	\$0	\$0	\$0	\$0	\$0	\$150,000	\$0	\$0	\$0	\$150,000
OK1401	\$0	\$0	\$0	\$1,600	\$0	\$0	\$0	\$0	\$0	\$0	\$0	\$400	\$0	\$0	\$2,000
RG0901	\$0	\$0	\$0	\$0	\$0	\$0	\$1,600	\$0	\$0	\$0	\$0	\$400	\$0	\$0	\$2,000
RG1201	\$0	\$0	\$0	\$0	\$0	\$0	\$800	\$0	\$0	\$0	\$0	\$200	\$0	\$0	\$1,000
RP1301	\$0	\$0	\$0	\$1,257,600	\$0	\$0	\$88,800	\$0	\$0	\$0	\$0	(\$1,346,400)	\$0	\$0	\$0
RP1401	\$0	\$0	\$0	\$0	\$0	\$0	\$1,600	\$0	\$0	\$0	\$0	\$400	\$0	\$0	\$2,000
SP1018	\$0	\$0	\$328,000	\$0	\$0	\$0	\$0	\$0	\$0	\$0	\$0	\$82,000	\$0	\$0	\$410,000
SP1106	\$0	\$0	\$0	\$102,400	\$0	\$0	\$0	\$0	\$0	\$0	\$1,179,000	\$1,408,600	\$0	\$0	\$2,690,000
SP1108	\$0	\$0	\$0	\$0	\$0	\$0	\$4,600,380	\$0	\$0	\$0	\$0	(\$4,600,380)	\$0	\$0	\$0
SP1109	\$658,533	\$0	\$0	\$0	\$0	\$0	\$0	\$0	\$0	\$0	\$1,190,415	\$5,478,523	\$0	\$0	\$7,327,471
SP1112	\$0	\$0	\$0	\$0	\$0	\$0	\$4,000	\$0	\$0	\$0	\$0	\$59,000	\$0	\$0	\$63,000
SP1114	\$0	\$0	\$0	\$0	\$0	\$160,000	\$0	\$0	\$0	\$0	\$0	\$0	\$0	\$40,000	\$200,000
SP1120	\$0	\$0	\$0	\$0	\$0	\$4,000	\$0	\$0	\$0	\$0	\$0	\$0	\$0	\$1,000	\$5,000
SP1122	\$0	\$0	\$0	\$238,568	\$0	\$0	\$0	\$0	\$0	\$0	\$0	\$0	\$0	\$0	\$238,568
SP1204	\$0	\$0	\$0	\$0	\$0	\$0	\$1,600	\$0	\$0	\$0	\$0	\$400	\$0	\$0	\$2,000
SP1206	\$0	\$0	\$0	\$0	\$0	\$0	\$466,933	\$0	\$0	\$0	\$0	(\$466,933)	\$0	\$0	\$0
SP1213	\$0	\$0	\$0	\$184,000	\$0	\$0	\$0	\$0	\$0	\$0	\$0	(\$184,000)	\$0	\$0	\$0
SP1312	\$0	\$0	\$0	\$0	\$0	\$0	\$1,849,600	\$0	\$0	\$0	\$0	(\$1,849,600)	\$0	\$0	\$0
SP1313	\$0	\$0	\$0	\$0	\$0	\$0	\$3,625,942	\$0	\$0	\$0	\$0	(\$3,625,942)	\$0	\$0	\$0
SP1314	\$0	\$0	\$0	\$0	\$0	\$0	\$1,012,800	\$0	\$0	\$0	\$0	(\$1,012,800)	\$0	\$0	\$0
SP1315	\$0	\$0	\$0	\$0	\$0	\$0	\$3,200	\$0	\$0	\$0	\$0	\$573,800	\$0	\$0	\$577,000
SP1316	\$0	\$0	\$0	\$0	\$0	\$0	\$13,600	\$0	\$0	\$0	\$0	\$1,896,400	\$0	\$0	\$1,910,000
SP1317	\$0	\$0	\$0	\$0	\$0	\$0	\$4,000	\$0	\$0	\$0	\$0	(\$4,000)	\$0	\$0	\$0
SP1318	\$0	\$0	\$0	\$0	\$0	\$0	\$8,000	\$0	\$0	\$0	\$0	\$1,258,000	\$0	\$0	\$1,266,000
SP1319	\$0	\$0	\$0	\$0	\$0	\$0	\$799,200	\$0	\$0	\$0	\$0	(\$799,200)	\$0	\$0	\$0
SP1321	\$10,000	\$0	\$0	\$0	\$0	\$0	\$0	\$0	\$0	\$0	\$3,984	\$0	\$0	\$0	\$13,984
SP1323	\$0	\$0	\$0	\$0	\$0	\$0	\$4,000	\$0	\$0	\$0	\$0	(\$4,000)	\$0	\$0	\$0
SP1324	\$0	\$0	\$0	\$0	\$0	\$0	\$375,200	\$0	\$0	\$0	\$0	(\$375,200)	\$0	\$0	\$0
SP1401	\$0	\$0	\$0	\$0	\$0	\$0	\$2,400	\$0	\$0	\$0	\$0	\$2,600	\$0	\$0	\$5,000
SP1403	\$0	\$0	\$0	\$481,600	\$0	\$0	\$0	\$0	\$0	\$0	\$0	(\$481,600)	\$0	\$0	\$0

FINANCIAL SUMMARY

Roadways

YEARLY SUMMARY														
PROJECT	Federal									Local	State			TOTAL
	FHWA (STP-U)	FHWA (SAFETY)	FHWA (BRIDGE)	FHWA (STP)	FHWA (I/M)	FHWA (130)	FHWA (NHS)	FHWA (BRM)	FHWA (BRO)	LOCAL	MoDOT	MoDOT-AC	MoDOT-GCSA	
FY 2015 continued														
SP1404	\$0	\$0	\$0	\$312,000	\$0	\$0	\$0	\$0	\$0	\$0	\$0	(\$312,000)	\$0	\$0
SP1405	\$0	\$0	\$0	\$0	\$0	\$0	\$0	\$0	\$0	\$0	\$0	\$2,000	\$0	\$2,000
SP1407	\$0	\$0	\$0	\$0	\$0	\$0	\$624,000	\$0	\$0	\$0	\$0	(\$624,000)	\$0	\$0
SP1408	\$0	\$0	\$0	\$0	\$0	\$0	\$0	\$0	\$0	\$0	\$0	\$1,277,000	\$0	\$1,277,000
SP1409	\$0	\$0	\$0	\$0	\$1,800	\$0	\$0	\$0	\$0	\$0	\$0	\$110,200	\$0	\$112,000
SP1410	\$0	\$0	\$0	\$0	\$0	\$0	\$1,600	\$0	\$0	\$0	\$0	\$394,400	\$0	\$396,000
SP1411	\$0	\$0	\$0	\$0	\$0	\$0	\$4,800	\$0	\$0	\$0	\$0	\$695,200	\$0	\$700,000
ST1101	\$0	\$0	\$0	\$511,700	\$0	\$0	\$0	\$0	\$0	\$0	\$0	(\$511,700)	\$0	\$0
ST1201	\$0	\$0	\$0	\$467,200	\$0	\$0	\$0	\$0	\$0	\$0	\$0	(\$467,200)	\$0	\$0
ST1401	\$0	\$0	\$0	\$176,000	\$0	\$0	\$0	\$0	\$0	\$0	\$0	(\$176,000)	\$0	\$0
WI1301	\$0	\$0	\$0	\$2,400	\$0	\$0	\$0	\$0	\$0	\$0	\$0	\$2,600	\$0	\$5,000
SUBTOTAL	\$3,424,533	\$911,900	\$328,000	\$10,564,709	\$181,800	\$2,206,500	\$17,248,655	\$0	\$0	\$7,428,384	\$6,228,968	\$0	\$273,500	\$48,796,949

FINANCIAL SUMMARY

Roadways

YEARLY SUMMARY														
PROJECT	Federal									Local	State			TOTAL
	FHWA (STP-U)	FHWA (SAFETY)	FHWA (BRIDGE)	FHWA (STP)	FHWA (I/M)	FHWA (130)	FHWA (NHS)	FHWA (BRM)	FHWA (BRO)	LOCAL	MoDOT	MoDOT-AC	MoDOT-GCSA	
FY 2016														
CC0901	\$0	\$0	\$0	\$1,600	\$0	\$0	\$0	\$0	\$0	\$0	\$400	\$0	\$0	\$2,000
CC1102	\$0	\$0	\$0	\$0	\$0	\$0	\$1,600	\$0	\$0	\$0	\$400	\$0	\$0	\$2,000
CC1110	\$0	\$0	\$0	\$0	\$0	\$0	\$3,364,000	\$0	\$0	\$0	(\$3,364,000)	\$0	\$0	\$0
GR1010	\$0	\$0	\$0	\$0	\$0	\$0	\$8,532,000	\$0	\$0	\$0	(\$8,532,000)	\$0	\$0	\$0
GR1104	\$0	\$0	\$0	\$0	\$0	\$40,000	\$0	\$0	\$0	\$0	\$0	\$0	\$10,000	\$50,000
GR1304	\$0	\$0	\$0	\$0	\$0	\$0	\$0	\$0	\$0	\$0	\$0	\$0	\$0	\$0
GR1403	\$0	\$0	\$0	\$0	\$0	\$0	\$0	\$0	\$0	\$0	\$2,000	\$0	\$0	\$2,000
MO1105	\$0	\$0	\$0	\$0	\$0	\$0	\$0	\$0	\$0	\$0	\$284,000	\$0	\$0	\$284,000
MO1201	\$0	\$2,700	\$0	\$0	\$0	\$0	\$0	\$0	\$0	\$0	\$300	\$0	\$0	\$3,000
MO1404	\$0	\$0	\$0	\$0	\$0	\$0	\$1,600	\$0	\$0	\$0	\$22,400	\$0	\$0	\$24,000
MO1406	\$0	\$0	\$0	\$637,600	\$0	\$0	\$0	\$0	\$0	\$0	(\$637,600)	\$0	\$0	\$0
MO1408	\$0	\$0	\$0	\$0	\$0	\$0	\$814,400	\$0	\$0	\$0	(\$814,400)	\$0	\$0	\$0
MO1409	\$0	\$0	\$0	\$0	\$0	\$0	\$1,318,400	\$0	\$0	\$0	(\$1,318,400)	\$0	\$0	\$0
MO1503	\$0	\$0	\$0	\$538,400	\$0	\$0	\$0	\$0	\$0	\$0	(\$538,400)	\$0	\$0	\$0
MO1505	\$0	\$0	\$0	\$164,000	\$0	\$0	\$0	\$0	\$0	\$0	(\$164,000)	\$0	\$0	\$0
MO1601	\$0	\$0	\$0	\$0	\$0	\$0	\$0	\$0	\$0	\$0	\$51,000	\$0	\$0	\$51,000
MO1603	\$284,000	\$0	\$0	\$0	\$0	\$0	\$0	\$0	\$0	\$71,000	\$673,000	\$0	\$0	\$1,028,000
MO1604	\$0	\$915,300	\$0	\$0	\$0	\$0	\$0	\$0	\$0	\$0	\$101,700	\$0	\$0	\$1,017,000
MO1605	\$0	\$0	\$0	\$7,000	\$0	\$0	\$0	\$0	\$0	\$0	\$197,000	\$0	\$0	\$204,000
MO1705	\$0	\$0	\$0	\$1,600	\$0	\$0	\$0	\$0	\$0	\$0	\$400	\$0	\$0	\$2,000
NX0906	\$0	\$0	\$0	\$1,600	\$0	\$0	\$0	\$0	\$0	\$0	\$400	\$0	\$0	\$2,000
NX1502	\$0	\$0	\$0	\$0	\$0	\$0	\$0	\$0	\$0	\$1,500,000	\$0	\$0	\$0	\$1,500,000
OK1401	\$0	\$0	\$0	\$1,600	\$0	\$0	\$0	\$0	\$0	\$0	\$400	\$0	\$0	\$2,000
RG0901	\$0	\$0	\$0	\$0	\$0	\$0	\$1,600	\$0	\$0	\$0	\$400	\$0	\$0	\$2,000
RG1201	\$0	\$0	\$0	\$0	\$0	\$0	\$800	\$0	\$0	\$0	\$7,200	\$0	\$0	\$8,000
RP1401	\$0	\$0	\$0	\$0	\$0	\$0	\$1,600	\$0	\$0	\$0	\$242,400	\$0	\$0	\$244,000
SP1018	\$0	\$0	\$5,137,600	\$0	\$0	\$0	\$0	\$0	\$0	\$0	\$1,284,400	\$0	\$0	\$6,422,000
SP1106	\$0	\$0	\$0	\$1,382,000	\$0	\$0	\$0	\$0	\$0	\$0	(\$1,382,000)	\$0	\$0	\$0
SP1109	\$0	\$0	\$0	\$0	\$0	\$0	\$1,928,440	\$0	\$0	\$0	(\$1,928,440)	\$0	\$0	\$0
SP1112	\$0	\$0	\$0	\$0	\$0	\$0	\$50,400	\$0	\$0	\$0	\$49,600	\$0	\$0	\$100,000
SP1204	\$0	\$0	\$0	\$0	\$0	\$0	\$1,600	\$0	\$0	\$0	\$400	\$0	\$0	\$2,000
SP1305	\$0	\$0	\$0	\$0	\$0	\$160,000	\$0	\$0	\$0	\$0	\$40,000	\$0	\$0	\$200,000
SP1307	\$0	\$0	\$0	\$0	\$0	\$160,000	\$0	\$0	\$0	\$0	\$40,000	\$0	\$0	\$200,000
SP1308	\$0	\$0	\$0	\$0	\$0	\$160,000	\$0	\$0	\$0	\$0	\$40,000	\$0	\$0	\$200,000
SP1315	\$0	\$0	\$0	\$435,200	\$0	\$0	\$26,400	\$0	\$0	\$0	(\$461,600)	\$0	\$0	\$0
SP1316	\$0	\$0	\$0	\$0	\$0	\$0	\$1,528,000	\$0	\$0	\$0	(\$1,528,000)	\$0	\$0	\$0
SP1317	\$0	\$0	\$0	\$0	\$0	\$0	\$684,000	\$0	\$0	\$0	(\$684,000)	\$0	\$0	\$0
SP1318	\$0	\$0	\$0	\$57,600	\$0	\$0	\$955,200	\$0	\$0	\$0	(\$1,012,800)	\$0	\$0	\$0
SP1321	\$10,000	\$0	\$0	\$0	\$0	\$0	\$0	\$0	\$0	\$3,984	\$0	\$0	\$0	\$13,984
SP1401	\$0	\$0	\$0	\$0	\$0	\$0	\$4,000	\$0	\$0	\$0	\$22,000	\$0	\$0	\$26,000
SP1405	\$0	\$0	\$0	\$0	\$0	\$0	\$0	\$0	\$0	\$0	\$2,000	\$0	\$0	\$2,000
SP1409	\$0	\$0	\$0	\$0	\$100,800	\$0	\$0	\$0	\$0	\$0	\$9,770,200	\$0	\$0	\$9,871,000
SP1410	\$0	\$0	\$0	\$0	\$0	\$0	\$316,800	\$0	\$0	\$0	\$8,902,200	\$0	\$0	\$9,219,000
SP1411	\$0	\$0	\$0	\$0	\$0	\$0	\$560,000	\$0	\$0	\$0	(\$560,000)	\$0	\$0	\$0
WI1301	\$0	\$0	\$0	\$4,000	\$0	\$0	\$0	\$0	\$0	\$0	\$46,000	\$0	\$0	\$50,000
SUBTOTAL	\$294,000	\$918,000	\$5,137,600	\$3,232,200	\$100,800	\$520,000	\$20,090,840	\$0	\$0	\$1,574,984	(\$1,145,440)	\$0	\$10,000	\$30,732,984

FINANCIAL SUMMARY

Roadways

YEARLY SUMMARY														
PROJECT	Federal									Local	State			TOTAL
	FHWA (STP-U)	FHWA (SAFETY)	FHWA (BRIDGE)	FHWA (STP)	FHWA (I/M)	FHWA (130)	FHWA (NHS)	FHWA (BRM)	FHWA (BRO)	LOCAL	MoDOT	MoDOT-AC	MoDOT-GCSA	
FY 2017														
CC0901	\$0	\$0	\$0	\$1,600	\$0	\$0	\$0	\$0	\$0	\$0	\$400	\$0	\$0	\$2,000
CC1102	\$0	\$0	\$0	\$0	\$0	\$0	\$1,600	\$0	\$0	\$0	\$400	\$0	\$0	\$2,000
GR1403	\$0	\$0	\$0	\$0	\$0	\$0	\$0	\$0	\$0	\$0	\$2,000	\$0	\$0	\$2,000
MO1105	\$0	\$0	\$0	\$0	\$0	\$0	\$0	\$0	\$0	\$0	\$284,000	\$0	\$0	\$284,000
MO1201	\$0	\$81,900	\$0	\$0	\$0	\$0	\$0	\$0	\$0	\$0	\$9,100	\$0	\$0	\$91,000
MO1404	\$0	\$0	\$0	\$0	\$0	\$0	\$5,628,800	\$0	\$0	\$0	\$1,383,200	\$0	\$0	\$7,012,000
MO1603	\$0	\$0	\$0	\$538,400	\$0	\$0	\$0	\$0	\$0	\$0	(\$538,400)	\$0	\$0	\$0
MO1605	\$0	\$0	\$0	\$164,000	\$0	\$0	\$0	\$0	\$0	\$0	(\$164,000)	\$0	\$0	\$0
MO1701	\$292,000	\$0	\$0	\$0	\$0	\$0	\$0	\$0	\$0	\$73,000	\$673,000	\$0	\$0	\$1,038,000
MO1705	\$0	\$0	\$0	\$2,017	\$0	\$0	\$0	\$0	\$0	\$0	\$203,400	\$0	\$0	\$205,417
NX0906	\$0	\$0	\$0	\$1,600	\$0	\$0	\$0	\$0	\$0	\$0	\$400	\$0	\$0	\$2,000
OK1401	\$0	\$0	\$0	\$1,600	\$0	\$0	\$0	\$0	\$0	\$0	\$400	\$0	\$0	\$2,000
RG0901	\$0	\$0	\$0	\$0	\$0	\$0	\$1,600	\$0	\$0	\$0	\$400	\$0	\$0	\$2,000
RG1201	\$0	\$0	\$0	\$0	\$0	\$0	\$6,400	\$0	\$0	\$0	\$339,600	\$0	\$0	\$346,000
RP1401	\$0	\$0	\$0	\$0	\$0	\$0	\$195,200	\$0	\$0	\$0	(\$195,200)	\$0	\$0	\$0
SP1109	\$0	\$0	\$0	\$0	\$0	\$0	\$2,454,378	\$0	\$0	\$0	(\$2,454,378)	\$0	\$0	\$0
SP1112	\$0	\$0	\$0	\$0	\$0	\$0	\$200,000	\$0	\$0	\$0	(\$50,000)	\$0	\$0	\$150,000
SP1204	\$0	\$0	\$0	\$0	\$0	\$0	\$1,600	\$0	\$0	\$0	\$39,400	\$0	\$0	\$41,000
SP1401	\$0	\$0	\$0	\$0	\$0	\$0	\$397,600	\$0	\$0	\$0	\$73,400	\$0	\$0	\$471,000
SP1405	\$0	\$0	\$0	\$0	\$0	\$0	\$0	\$0	\$0	\$0	\$2,000	\$0	\$0	\$2,000
SP1409	\$0	\$0	\$0	\$0	\$8,883,900	\$0	\$0	\$0	\$0	\$0	(\$8,883,900)	\$0	\$0	\$0
SP1410	\$0	\$0	\$0	\$0	\$0	\$0	\$7,375,200	\$0	\$0	\$0	(\$7,375,200)	\$0	\$0	\$0
WH1301	\$0	\$0	\$0	\$716,000	\$0	\$0	\$0	\$0	\$0	\$0	\$129,000	\$0	\$0	\$845,000
SUBTOTAL	\$292,000	\$81,900	\$0	\$1,425,217	\$8,883,900	\$0	\$16,262,378	\$0	\$0	\$73,000	(\$16,520,978)	\$0	\$0	\$10,497,417
GRAND TOTAL	\$15,399,094	\$6,074,300	\$7,553,600	\$26,307,521	\$9,382,500	\$3,294,000	\$58,347,525	\$1,189,657	\$1,672,800	\$21,582,592	\$11,661,440	\$1,549,600	\$351,000	\$164,365,629

FINANCIAL CONSTRAINT
Roadways

	FHWA Federal Funding Source										MoDOT Programmed Funds	State Operations and Maintenance	Local	TOTAL
	STP-U	Safety	Bridge	STP	I/M	130	NHS	BRM	BRO	TOTAL Federal Funds				
2014 Funds Programmed	\$11,388,561	\$4,162,500	\$2,088,000	\$11,085,395	\$216,000	\$567,500	\$4,745,652	\$1,189,657	\$1,672,800	\$37,116,065	\$24,715,990	\$6,293,898	\$12,506,224	\$80,632,177
2015 Funds Programmed	\$3,424,533	\$911,900	\$328,000	\$10,564,709	\$181,800	\$2,206,500	\$17,248,655	\$0	\$0	\$34,866,097	\$6,502,468	\$6,419,776	\$7,428,384	\$55,216,725
2016 Funds Programmed	\$294,000	\$918,000	\$5,137,600	\$3,232,200	\$100,800	\$520,000	\$20,090,840	\$0	\$0	\$30,293,440	(\$1,135,440)	\$6,548,171	\$1,574,984	\$37,281,155
2017 Funds Programmed	\$292,000	\$81,900	\$0	\$1,425,217	\$8,883,900	\$0	\$16,262,378	\$0	\$0	\$26,945,395	(\$16,520,978)	\$6,679,135	\$73,000	\$17,176,552
Total	\$15,399,094	\$ 6,074,300	\$ 7,553,600	\$26,307,521	\$ 9,382,500	\$ 3,294,000	\$58,347,525	\$1,189,657	\$1,672,800	\$129,220,997	\$ 13,562,040	\$25,940,980	\$21,582,592	\$190,306,609

	Prior Year	2014	2015	2016	2017	TOTAL
Available State and Federal Funding	\$25,292,494	\$23,240,000	\$23,620,000	\$28,480,000	\$23,040,000	\$123,672,494
Available Operations and Maintenance Funding	\$0	\$6,293,898	\$6,419,776	\$6,548,171	\$6,679,135	\$25,940,980
Available Suballocated STP-U/Small Urban	\$24,683,089	\$5,414,570	\$5,414,570	\$4,580,384	\$4,580,384	\$44,672,997
Available Suballocated BRM	\$2,201,457	\$386,195	\$386,195	\$386,195	\$386,195	\$3,746,237
TOTAL AVAILABLE FUNDING	\$52,177,040	\$35,334,663	\$35,840,541	\$39,994,750	\$34,685,714	\$198,032,708
Programmed State and Federal Funding	\$0	(\$68,125,953)	(\$47,788,341)	(\$35,706,171)	(\$17,103,552)	(\$168,724,017)
TOTAL REMAINING (including prior balance)	\$52,177,040	\$19,385,750	\$7,437,950	\$11,726,529	\$29,308,691	\$29,308,691

Remaining State and Federal Funding	(\$2,521,792)
Remaining Suballocated STP-Urban/Small Urban	\$29,273,903
Remaining Suballocated BRM	\$2,556,580
TOTAL REMAINING	\$29,308,691